



FUCHS

A Metawater Company

AeroStar Aerator

Surface aerator with vertical shaft

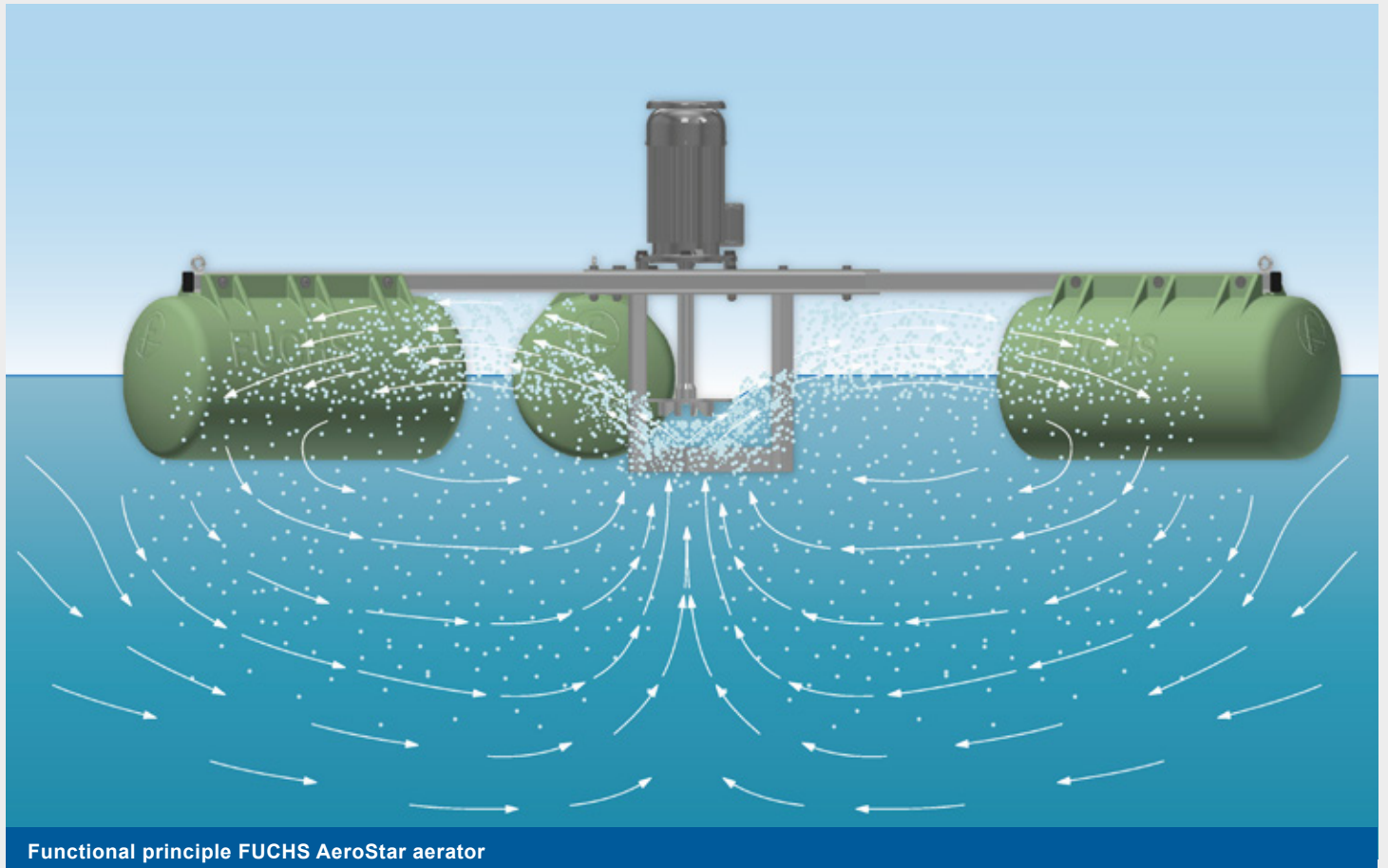
GENERAL INFORMATION

The **FUCHS AeroStar aerator** is another economical solution for the efficient aeration and circulation of municipal or industrial wastewater. It is the result of many years of experience in the construction of mechanical aerators, appropriate hydraulic examinations and consequent development work.

This specially designed surface aerator with vertical shaft is mainly used in:

- » **Wastewater lagoons**
- » **Equalization basins**
- » **Activated sludge plants**
- » **Mine water treatment plants**

AeroStar aerators with direct drive have a particularly stable and quiet running behavior. The innovative impeller achieves high oxygen yields.

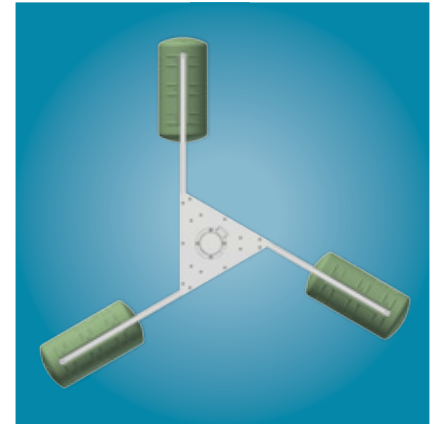
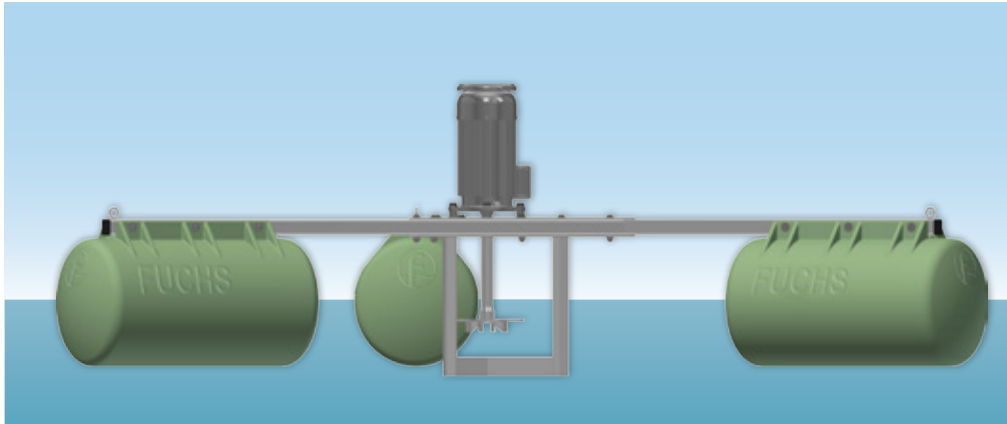


OPERATING MODE

The rotor sucks in the wastewater to be aerated from below and throws it in all directions above the water level. The air entry occurs mainly in the turbulent zone around the rotor. Furthermore, air bubbles are formed when the waterdrops hit the surface.

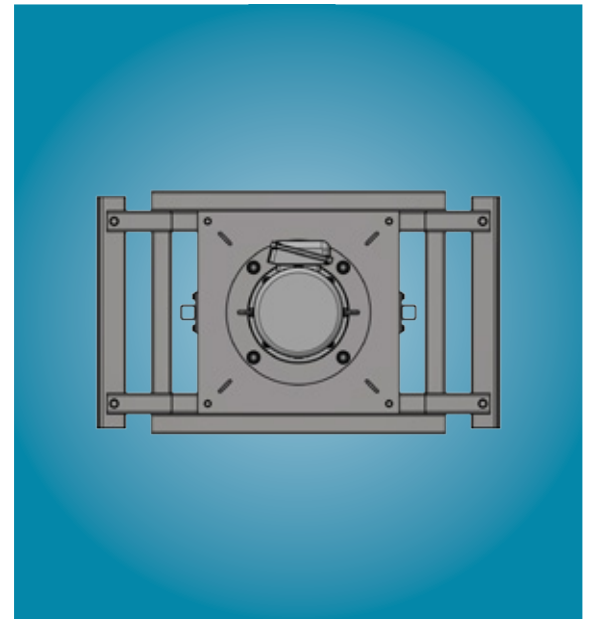
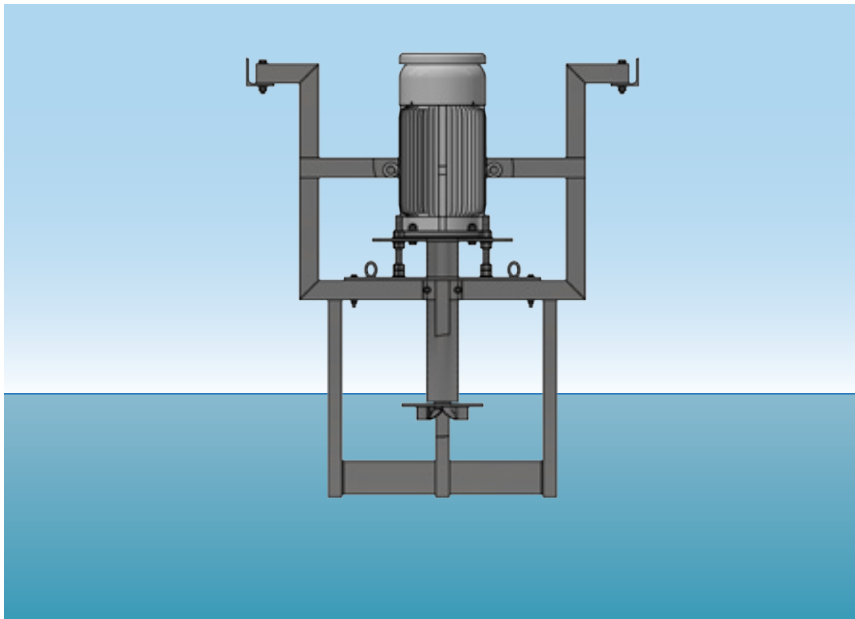
INSTALLATION

AeroStar aerators can be easily integrated into existing systems, are easy to install and have low maintenance costs. When used in lagoons and basins with **fluctuating water levels**, the installation is carried out on **robust floats**.



AeroStar aerator on floats

In basins with a **constant water level**, AeroStar aerators can be attached to machine bridges **with mounting brackets**. The steel mounting brackets are individually adapted to the project related conditions.



AeroStar aerator with standard mounting bracket



AeroStar aerator with mounting bracket



AeroStar aerator on floats

DIVERSE POSSIBILITIES OF APPLICATION

FUCHS AeroStar aerators are ideal for a variety of applications in municipal and industrial wastewater treatment.



Post-treatment of wastewater from sugar industry



Treatment of wastewater from latex and rubber processing



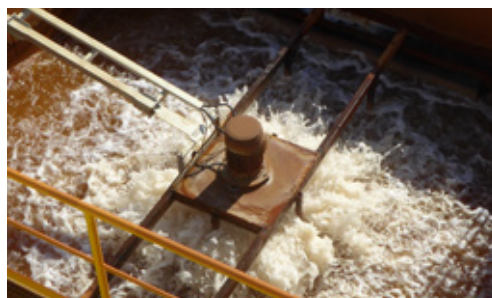
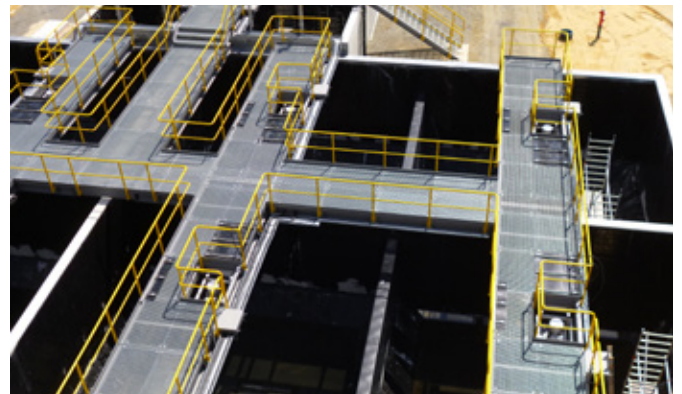
Treatment of wastewater from slaughterhouses and meat processing



Treatment of wastewater from chemical industry

A special application of FUCHS AeroStar aerators is their use in mine water treatment for the desorption of dissolved carbon dioxide.

If CO₂ stripping is carried out in basins with a constant water level, the aerators are installed on tailor-made mounting brackets on machine bridges. If the highly efficient desorption process takes place in flowing channels, the aerators are mounted on special floats.



AeroStar aerators for stripping CO₂

TECHNICAL DATA

AeroStar aerators are intelligently and robustly designed. They work reliably even in difficult wastewater and require less maintenance.

		Standard	Variants
Motor	Nominal power	2,2 - 22 kW	Upon request
	Voltage, frequency	400/460 V 50/60 Hz	Upon request
	Protection class	IP 56	Upgrade to IP 65
	Energy efficiency class	IE3	IE 4 upon request
	Isolation	ISO F	ISO H
	Certifications	Nema Premium/ CSA / UL	Upon request
Machine	Shaft and impeller	Stainless steel 1.4301	Stainless steel 1.4571
Installation options	Wall mounting Bridge mounting	Galvanized steel	Stainless steel
	Float		
Float	Material frame	Galvanized steel	Stainless steel
	Pontoons	PE foamed	PE not foamed, FRP
Optional equipment			Cold conductor
			Duct with heating
Electrical cable		Delivery on request	Upon request
Accessories	Pivot arm, landside mount, mooring rope, rope winch, local control switch	Delivery on request	Upon request

The FUCHS AeroStar aerator – advantages at a glance

- » Surface aerator with stable running performance
- » Efficient aeration and circulation of wastewater
- » High oxygen yields
- » Easy integration into existing systems
- » Long lifetime and low maintenance requirements thanks to high quality machine parts and high manufacturing standards
- » Simple and flexible installation on robust floats or with individually adapted mounting frames on machine bridges

Services from FUCHS

- » Customized solutions for a wide range of requirements
- » Support with design and dimensioning
- » Recommendations for positioning of the equipment
- » Installation of equipment
- » Supervision of installation work on site
- » Extensive After-Sales Service
- » Maintenance and repair
- » Warranty extensions





FUCHS

A Metawater Company

**THAT'S YOUR WAY TO A
CLEAN SOLUTION!**

FUCHS Enprotec GmbH
Stocktal 2 | 56727 Mayen
Germany

 +49 2651 80040

 info@fuchswater.com

www.fuchswater.com